



COLONNADE



HAMMOND[®] ORGAN
A MEMBER OF THE MARMON GROUP OF COMPANIES

Hammond proudly presents the exciting Colonnade... a three channel console organ that opens new horizons in musical creativity and showmanship! It blends the finest traditions of the world famous Hammond Sound with unique new features that put you on center stage for every performance.

These new features include Hammond's exclusive PRO FOOT™, an easy and instant way to preset five professional special effects without ever having to remove your hands from the keyboards, and DUAL VOICE™, which gives you the effect of playing two octaves apart, while using only one finger. In addition, the Colonnade spotlights the breathtaking orchestral PHILHARMONIC STRINGS™ and the dazzling arpeggios of FASCINATING FINGERS™.

Since the invention of the world famous Hammond tonebar organ in 1934, the Hammond name has been synonymous with quality organ sound. This tradition of excellence is blended with uncompromising standards in manufacturing. The result: your new Colonnade will give you both unmatched musical versatility and dependable performance throughout the years to come. It is truly an investment that stands the test of time!

HAMMOND

the first name in organs



THEATRE STYLING is highlighted with a horseshoe design in a richly grained, hand-rubbed walnut cabinet and dramatic "cove" lighting.



TRADITIONAL PECAN cabinet with a natural wood patina carved in an elegant styling. Recessed lighting visually accents tab control areas.

Available in the UK to special order only.

PRO FOOT, a new Hammond innovation, provides the opportunity to captivate your audience with an amazing display of professional special effects. A footswitch to the left of the expression pedal activates any of five illuminating preset effects: Piano solo, Dual Voice, Leslie Slow/Fast, Sustain, or you can cancel all animation and channel the entire organ through the main speakers for the magnificent pipe organ or cathedral organ sound. All these effects are now yours and best of all — "Look Ma, no hands!" — all with just a nudge of your foot.

DUAL VOICE, on the Bright Percussion and Second Voices converts a single 8' pitch to a 16' and 4' pitch... recreating nostalgic sounds of the past and the "now sound of today and tomorrow". Using the Harpsichord, you can create a dramatic Grand Harpsichord... or with the Piano, you'll sound like the fabulous Eddie Duchin's "Society Piano".

The Colonnade also offers you the lush shimmering beauty of Hammond's PHILHARMONIC STRINGS. With 16', 8' and 4' pitches available on both manuals, you can create vibrant string solos or rich background accompaniments. Variable Attack, Variable Sustain, and Variable Volume give you total command of expression. Either used alone or combined with the tonebars or other voices on your Colonnade, this breathtaking string division provides authenticity, versatility and flexibility never before possible.

Hammond's MELODY MAKER[®] puts a variety of authentic preset voices conveniently at your fingertips. "Multiplex Synthesis" technology and deluxe filtering systems have been developed to duplicate the exact tonal characteristics of each individual instrument. The reedy Sax, hollow Clarinet, mellow Trombone, haunting Oboe, and brassy Trumpet produce realistic orchestral solos, as well as entire brass and reed sections. Exciting

instrumental sounds are found with the breathy Accordion, romantic Hawaiian Guitar, sassy Do-Wah and unique Novelty. Variable Volume allows you to custom blend these voices with all the other upper manual voices for your own personal sound.

Your "third hand"... the amazing new FASCINATING FINGERS, provides a variety of easy, professional sounding accompaniments for the beginner, and unlimited dramatic and exciting special effects for the experienced musician. With five different patterns and three distinctive combinable voices, you are only limited by your own imagination.

For the beginner, Hammond's exclusive Easy Play way to learning includes 20 musically correct ONE FINGER CHORDS. AUTOCHORD[®] and Hammond's exclusive 13 pattern variable BASS WALK create automatic professional sounding chords and pedal accompaniments, with the realism of a live string bass player. Electronic MEMORY, as well as

COLON



Hammond's patented NOTE-A-CHORD®, may be used with One Finger Chords or chords you form yourself...enabling the beginner as well as the experienced musician to benefit from these versatile easy play features.

The famous Hammond PIANO SOLO reflects unusual dedication to authenticity of sound with percussive decay and independent keying. Treble notes are bright and crisp, while the lower range offers the depth and resonance of a concert grand piano.

The POLYSYNTHESIS PERCUSSION section hosts an impressive range of effects including the beautiful Vibraharp, Twin Mallet Marimba and Chimes. 2nd, 3rd, and 5th harmonics...along with KEY CLICK...duplicate the distinctive Hammond sounds of years past.

Pluck, Pizzicato, Banjo, Harpsichord and Piano are spectacularly reproduced in the BRIGHT PERCUSSION section. Second Voice expands this instrumentation to include Violin, English Horn, Post Horn,

Diapason, and the weepy Kinura, reminiscent of old theatre pipe organs. Easy, quick and dramatic professional registration changes are yours with the Colonnade's PISTON PRESETS. Five specially selected and balanced settings for the upper and lower manuals, pedals, and Leslie speakers offer a wide spectrum of the most popular organ sounds. Requiring only the touch of a finger to engage or cancel, they can be used alone or in combinations to provide any player with unmatched versatility and flexibility.

HARMONIC TONEBARS are your symphony at home. This wide range of pure harmonic tones, offered on both the upper and lower manuals, permit almost infinite tone combinations...and form the musical cornerstone for the famous and very recognizable "Hammond Sound".

The versatile AUTO VARI® 64 changes rhythm patterns the way a live drummer

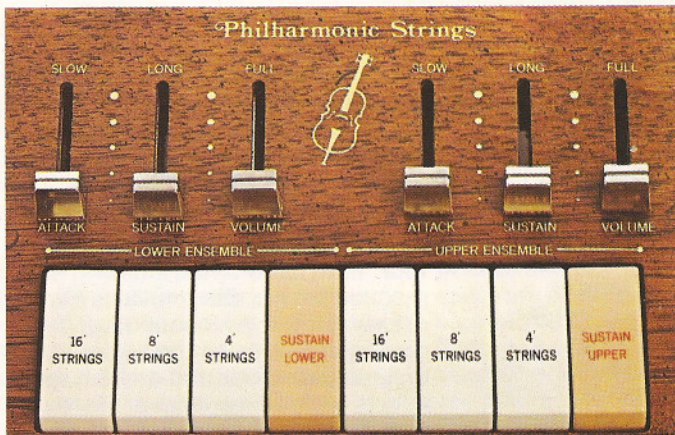
varies his playing. Sixteen rhythms...including a new Disco beat...offer four different variations each, providing 64 exciting patterns. In addition, two or more rhythms may be combined to create even more patterns, and they may be programmed to play continuously or to change after a preestablished number of measures.

The Colonnade's unique three channel sound system is the key to its fabulous tone quality. Three separate amplifiers channeled through a specially designed high performance speaker system offer complete sound separation, total versatility and the majestic sound that thrills and inspires every audience.

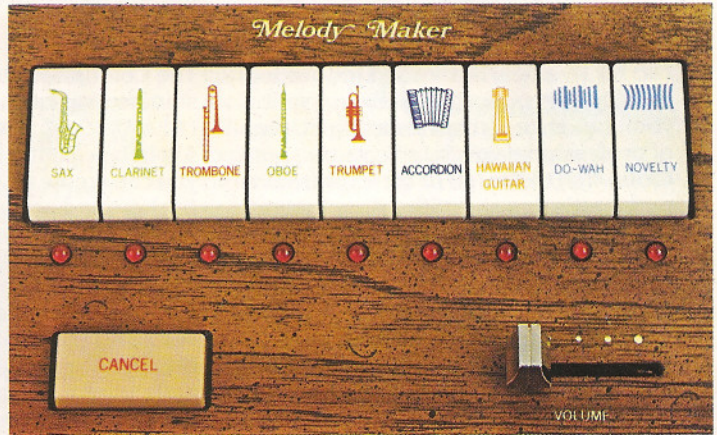
The COLONNADE...full console sound...unique features for musical versatility...the finest quality and craftsmanship backed by the trusted Hammond name. It's everything you've ever wanted in an organ...so why should you settle for anything less than a Hammond!

COLONNADE

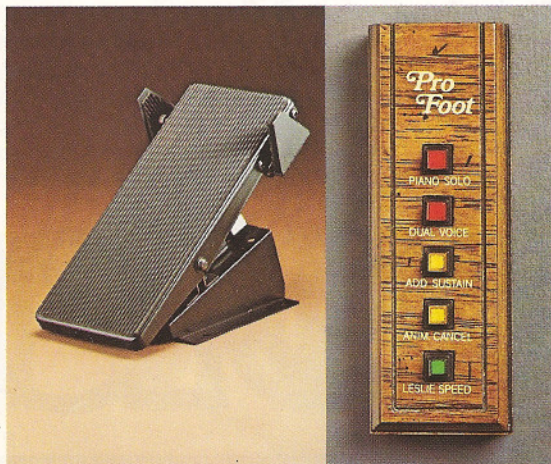




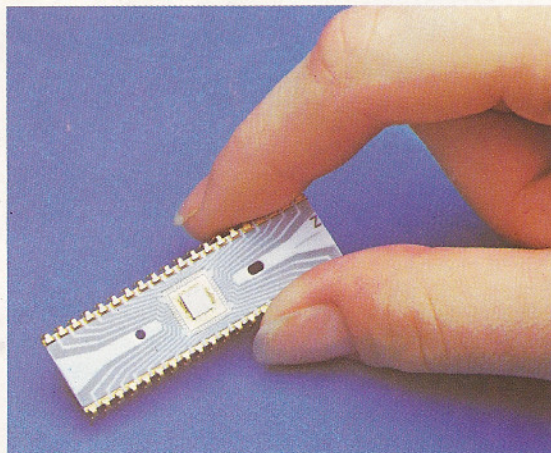
PHILHARMONIC STRINGS offer the breathtaking effects of a full orchestral string section. Variable Attack, Variable Sustain and Variable Volume gives you total command of expression.



MELODY MAKER gives you unmatched authenticity of instrumental solos. These voices may be blended with upper manual voices to create your own individual orchestration.



PRO FOOT is activated with a switch on the expression pedal. It provides an easy and instant way to preset five professional special effects without ever having to remove your hands from the keyboards.



Hammond engineering leadership is reflected in the exclusive LSI (Large Scale Integrated) multiplex synthesis circuitry for the Colonnade. These custom LSI circuits contain up to 8,000 separate electronics devices in each tiny (about 1/4" square) chip. The result is outstanding performance and musical integrity with unmatched reliability.

SPECIFICATIONS

- **Multiplex Synthesis Technology**
- **Two 61-Note Keyboards**
25 Pedals
- **Harmonic Tonebars**
Upper Keyboard: One set of 9 Harmonic Tonebars
Lower Keyboard: One set of 9 Harmonic Tonebars
- **Percussion**
Synthesis Percussion: Variable Repeat, Key Click, Percussion Fast, Second, Third and Fifth Harmonic Percussion, Vibraharp, Twin Mallet Marimba, Chimes Solo
Bright Percussion: Pluck, Pizzicato, Banjo, Harpsichord, Piano, Piano Solo
Second Voices — Violin, English Horn, Post Horn, Kinura, Diapason, Variable Volume Slider
- **Dual Voice™**
- **Pro Foot™**
Piano Solo, Dual Voice, Add Sustain, Animation Cancel, Leslie Speed
- **Pedals**
16' and 8' Tonebars, Pedal Sustain, Bass Guitar, Pedal Mute, Lower to Pedal
- **Easy Play Group**
Variable Bass Walk, Memory, Note-A-Chord®, One Finger Chords
- **Autochord®**
True Root/Fifth, Pedals
- **Auto Vari® 64**
16 Rhythms, each with four variations, Measure Selector, Tempo Selector, Volume Selector, Silent/Sound, Continuous/Touch Start, Foot Switch Reset/Cancel
- **Follow the Player Rhythms**
Bass Drum, Cymbal, Brush, Snare Drum
- **Animation**
Leslie Upper, Leslie Lower, Leslie Reverb, Leslie Chorale, Vibrato On, Vibrato Small, Delayed Vibrato
- **Variable Reverb**
- **Brilliance, Volume Soft**
- **Philharmonic Strings™**
Upper Keyboard: 16', 8' and 4' Strings, Variable Attack, Variable Sustain, Variable Volume
Lower Keyboard: 16', 8' and 4' Strings, Variable Attack, Variable Sustain, Variable Volume
- **Sustain**
Variable Upper Manual, Variable Lower Manual
- **Melody Maker™**
Sax, Oboe, Trombone, Clarinet, Trumpet, Accordion, Hawaiian Guitar, Do-Wah, Novelty, Variable Volume, Cancel
- **Headphone Jack**
- **Speakers**
One 15", Two 8", One 6" Speakers
- **Power Amplifiers**
2-35 Watt, 1-10 Watt
- **Dimensions**
47-1/2" W, 27-3/4" D, 43-3/4" H. (51" H with music rack up)
- **Weight**
390 pounds, including bench and pedals



HAMMOND ORGAN (UK) LIMITED
19 Denbigh Hall, Bletchley, Milton Keynes MK3 7QT